

CHEAT SHEET

Technical Analysis

G <Go>

enables you to create and save custom graphs that combine various technical indicators you can use to spot both intraday and historical trading patterns for a selected security. The following technical indicators are available via the *Graph Worksheet* function.

GOC

provides a general overview chart of historical prices and trading pattern projections.

MACD

graphs a moving average convergence/divergence indicator.

WLPR

uses a Williams %R graph to help you determine overbought or oversold levels.

DMI

measures the net total price movement of a security over time.

PIV <Go>

calculates a selected security's pivot points, which are potential support and resistance levels that may serve as lower and upper price boundaries.

MKTP <Go>

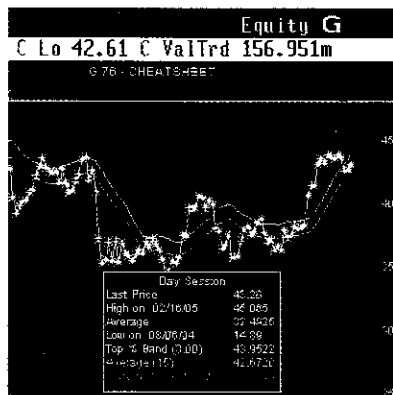
charts the distribution of prices over various intervals during the trading day.

PFP

lets you filter out small price changes so you can better identify corrections, reversals and trends.

TE

maps a band around a security's price based on the historical



standard deviations above and below the moving average.

RSI

displays a historical relative strength index graph based on either closing prices or yields.

BTST <Go>

calculates the amount of money potentially made or lost during a set period by trading a selected security based on the signals of various technical studies as well as on a buy-and-hold strategy.

GM <Go>

tracks block, non-block and total money flows for a selected security.

BOLL

graphs lower and upper price boundaries above and below a moving average price.

ROC

charts the highest and lowest rates of price change within a specified date range, allowing you to track volatility and momentum.

MAE

tracks lower and upper price boundaries that form an envelope around the moving average.

PTPS

graphs stop-and-reversal points, which indicate when you should reverse your position.

You can also access the preceding technical indicators by typing a security's ticker followed by <Equity>, the mnemonic and <Go>.

QSRC <Go>

lets you create and store searches for equities based on parameters you set, including technical indicators.

TNTS <Go>

provides a schedule of seminars that feature technical analysis experts as guest speakers.

Compiled by MARY K. WOOD
mwood@bloomberg.net